

Keble Advanced Studies Centre



Keble
College

News from Hilary Term

Follow us at www.keble-asc.com
and on Twitter

Dr Apala Majumdar awarded Royal Society grant

Dr Apala Majumdar, one of the leaders of our Complexity Cluster, has been awarded a Royal Society International Exchange Scheme grant to set up a bilateral exchange programme with the Tata Institute of Fundamental Research (Centre for Applicable Mathematics) in Bangalore, India. This scheme is for scientists in the UK who want to undertake collaboration with scientists overseas through either a one-off visit or bilateral travel.

The grant was aided in part by the **Keble Small Research Grants** scheme, which enabled Dr Majumdar to visit the Indian Institute of Science and the Tata Institute in 2012. The Tata Institute of Fundamental Research is a National Centre of the Government of India, under the umbrella of the Department of Atomic Energy where basic research in physics, chemistry, biology, mathematics, computer science and science education is carried out.

Dr Majumdar's grant is for a one-year project focussed on the mathematical analysis of defects in liquid crystals and related condensed matter systems, concluding with an international workshop in late 2013 or early 2014.



Tata Institute of Fundamental Research
टाटा मूलभूत अनुसंधान संस्थान

Meetings and events

ASC Creativity Lecture Series 2013

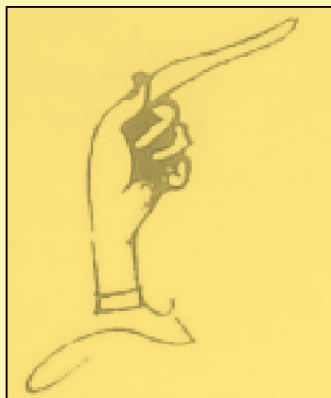


The ASC Creativity Lectures Series 2013 opened last Jan 31 with Dr Pierre Lemonnier's lecture entitled "The blending power of things: from mundane to strategic objects". Here, Dr Lemonnier talked about the materiality of rituals he has observed during his extensive work in Papua New Guinea, particularly with the Ankave people. The lecture was followed by a drinks reception and informal discussion between invited speaker and assistants.

Photo: Dr Lambros Malafouris (left), Creativity cluster leader and convenor of the Lecture Series with invited speaker Dr Lemonnier (centre) and Pitt Rivers Museum's curator Dr Dan Hicks (right) at the opening of the Lecture Series.

Meetings and events

Medieval and Renaissance Cluster Lecture Series 2012-2013



Hand with pointing finger frequently drawn by active readers in early modern Europe.
Image: Bill Sherman

During Hilary Term, the Medieval and Renaissance cluster hosted three lectures as part of its first Lecture Series (2012-2013). Invited speakers included **Bill Sherman**, Professor of English at University of York, who showed us his research of marginalia, the drawing of sketches, diagrams, iconic tags and body parts by active readers on pages margins, in early printed books as a visual mode in early modern Europe. **Miri Rubin**, Professor of Medieval and Early Modern History at Queen Mary, University of London, exposed some issues, faced in recent times by scholars focussed on the Middle-Ages, in approaching the study of the humanities and social sciences. Finally, Professor of Rhetoric and English Literature at Edinburgh University, **Greg Walker**, offered a speculative exploration of "Play of Love", a 1528-29 play by English writer John Heywood.



Picture (left to right): Prof. Tom Higham, interim director of the ASC, Dr Tracey Sowerby, Prof. Miri Rubin, Dr Ian Archer, Dr Anna Caughey. Prof. Rubin's talk was attended by many students, a large number of whom were from outside Keble College.

Networks Cluster Public Lecture: Characterisation of Networks and Graphs



Picture: Prof. Richard Wilson (centre) with Networks Cluster leaders Professors Dieter Jaksch and Gesine Reinert.

Prof. Richard Wilson (Department of Computer Science, University of York) visited Keble during Hilary Term and collaborated with our Networks Cluster on protein-protein interaction networks. During his stay, Prof. Wilson delivered a Public Lecture entitled "Characterisation of Networks and Graphs" where he discussed a wide range of characterisations carried out at York over the past decade, inspired from diverse areas of mathematics and physics. Their results have enabled the different properties of networks in general to be revealed in new ways.

Up coming events...

All ASC events are listed on www.keble-asc.com

Medieval and Renaissance Cluster Events



The Medieval and Renaissance Cluster Lecture Series 2012-2013 continues next term with Prof. **Helen Hackett** 's rescheduled talk: *'Sisterhood and female friendship in a seventeenth-century verse miscellany: Constance Aston Fowler's manuscript anthology'* 26 April, 5pm at Roy Griffiths Room.
All are welcome.

Professor **Daniel Javitch**, Emeritus Professor of Comparative Literature at New York University, will be visiting our Medieval and Renaissance Studies Cluster between 15 May and 5 June. A leading expert on Renaissance literature, Professor Javitch is currently researching the emergence of poetic genre theory in the sixteenth century. While at Keble he will be working with Dr Nicola Gardini, Italian Fellow at Keble and member of this Cluster, and will give a public lecture on 'Ariosto's chivalric romance as source of Italian epic theory' on 28 May.

Professor Javitch's publications include *Poetry and Courtliness in Renaissance England* (1978), *Proclaiming a Classic: The Canonisation of Orlando Furioso* (1991), *Saggi sull'Ariosto e la composizione dell'Orlando Furioso* (2012) and the Norton Critical Edition of Baldessare Castiglione's *Courtier* (2002).

He has received several distinctions for his research, including visiting professorships at Harvard, Columbia, UC Berkley, UCLA, and the École des Hautes Études en Sciences Sociales in Paris.

Details of Prof. Javitch's talk are to follow on the ASC website: www.keble-asc.com



Creativity Lecture Series 2013

Next term, the Creativity Cluster will be hosting two distinguished professors from London School of Economics, Maurice Bloch and Richard Sennett as part of the Creativity Lecture Series 2013.

Professor Maurice Bloch is an expert in ideology and cognitive anthropology. His research has been mainly carried out in two different areas of Madagascar and he is the author of an extensive list of articles and books dealing with religion, kinship, economics, politics and language.
Diary date: 26 April, 5 pm at O'Reilly Theatre.

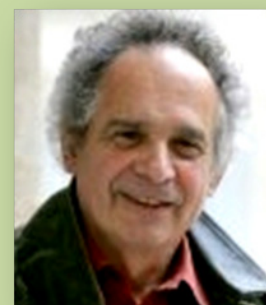


Image: www2.lse.ac.uk



Professor Richard Sennett (LSE & New York). Professor Sennett's research embraces ethnography, history, and social theory; although he is best known for his research on how individuals and groups make social and cultural sense of material facts -- about the cities in which they live and about the labour they undertake. *Diary date:* 31 May, 5pm, Pusey Room.

Image: www.richardsennett.com

Coming events...

All ASC events are listed on www.keble-asc.com

Complexity Cluster Workshop 2013

The Complexity Cluster is pleased to announce its 2013 Workshop to be held at Keble College on 30 April. Confirmed speakers are:

Dr Li He, Professor in Computational Aerothermal Engineering, Department of Engineering, University of Oxford.

Dr Brian Smith, Fellow and Tutor in Physics at Keble College, University Lecturer in Experimental Quantum Physics, Department of Physics at Oxford.

Dr Simon Butt, Tutor at Keble College, University Lecturer in Neuroscience, Department of Physiology, Anatomy and Genetics at Oxford.

Dr Apala Majumdar, Fellow by Special Election at Keble College and Research Fellow in Materials Science and Engineering, Oxford Centre for Collaborative Applied Mathematics. She has also recently been appointed Lecturer in Applied Mathematics at the University of Bath, UK.



Additionally, **Prof. Marshall Slemrod**, University of Wisconsin, will be in Keble for two months in total over the year. He will be collaborating with the Cluster working on partial differential equations in mechanics and geometry and will also give a plenary lecture.

Details of both events to follow on the ASC website:
www.keble-asc.com

ASC updates



Podcasts

Have you missed an ASC lecture? Many of the ASC lectures are available as podcasts. You can find these and other Keble recordings at:
<http://podcasts.ox.ac.uk/units/keble-college>